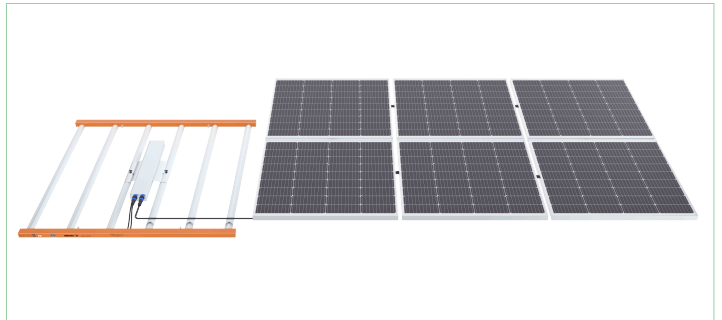
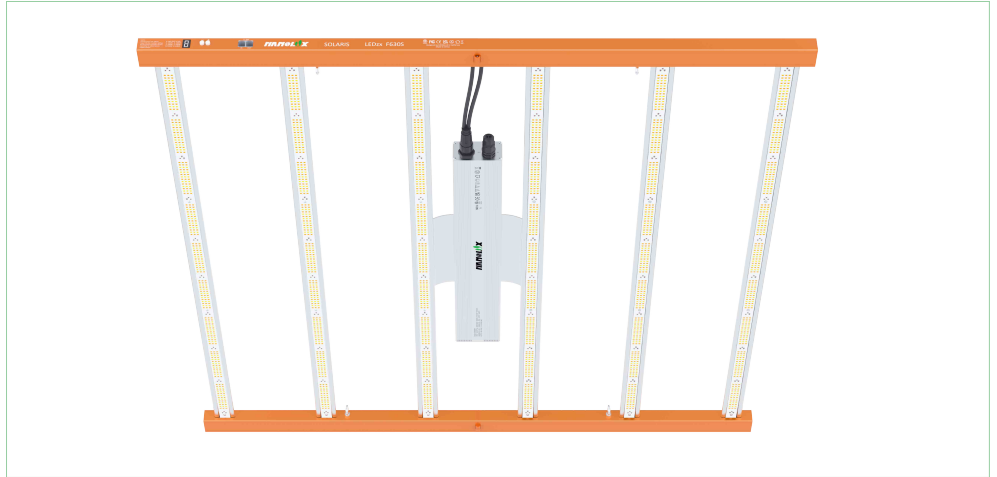


SOLARIS LEDzx F630S

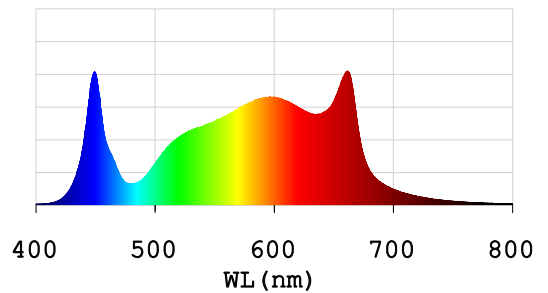
- ✓ Revolutionary Solar Integration Tech
- ✓ Fronted with 3.2mm Low-Iron Frosted Glass for High Transparency
- ✓ Save at least 40% on electricity
- ✓ 0-10V & Keypad Control
- ✓ All Components Easy Plug&Play



Features

- Innovative Solar Connection:**
 Witness a groundbreaking leap in technology with Solaris LED fixture. Seamlessly connect PV panels for a truly innovative lighting solution. Bring you a step to the distinctive high-tech.
- Efficient Solar-to-electricity, Cost-effective:**
 Prioritize the identification and utilization of solar resources. Solaris LED fixture, with built-in MPPT technology, can convert over 99% of solar energy into electricity without compromising its performance. Achieving high-efficiency energy conversion and utilization, Solaris LED provides an eco-friendly and cost-effective solution.
- Diverse Voltage Applicable::**
 With a wide voltage range, Solaris LED fixture can ease into varying voltage inputs. Enjoy reliable performance across different setups.
- Tailor Your Lighting Environment:**
 Enjoy the freedom to adjust brightness with 6 levels of customizable light intensity. Adapt to the supplementary light needs of crops at different growing stages and times of the day. Find the perfect setting for any period.

Spectrum



Specifications

Product	LEDzx F630S
Product code	80.01.0390
Light output PPF	1710 $\mu\text{mol/s}$
Efficiency	2.70 $\mu\text{mol/J}$
Dimming	OFF/0-10V, 130W, 210W, 315W, 420W, 525W, 630W
Input power	630W
Input voltage	AC 120V-277V
Input frequency	50/60Hz
Light distribution	120°
Mounting height	8" - 24" (20-60cm) above canopy
Operating temperature	0°C~35°C
Operating humidity	0~95%
Thermal management	Passive
Power factor	> 0.97
Total harmonic distortion	< 10%
Requirement of installment	Comply with DLC/ETL/FCC/CE/EAC certificate
Lifetime L90	> 50,000hrs
IP rating	IP65
Product dimensions	1135x1149x69mm
Product weight	9.1KG
Packaging method	1PC/Carton (LED fixture with Driver)
Packing dimensions	1175x90x625mm
Gross weight	12 KG
Number of containers	20GP: 350 Carton 40HQ: 940 Carton
Warranty	1 year standard warranty
Region applied	USA, Canada, Australia, EU, Russia, etc.
Industry applied	Grow lighting, Greenhouse

Nominal Electrical AC Input*

AC voltage	120V	240V	277V
AC current	5.4A	2.65A	2.3A
AC power	648W	636W	637W
Power factor	0.99	0.99	0.99

* At 25°C (77°F) Ambient Temperature